



IU SCHOOL OF MEDICINE DIVERSITY FACT SHEET ACADEMIC YEAR 2020-2021

	TOTAL	FEMALE	INTER NATIONAL	HISPANIC OR LATINO	TWO OR MORE RACES	AMERICAN INDIAN/ALASKAN NATIVE	AFRICAN AMERICAN / BLACK	ASIAN AMERICAN/ASIAN	NATIVE HAWAIIAN/PACIFIC ISLANDER	WHITE	UNKNOWN
STUDENTS¹											
MEDICAL EDUCATION	1,441	47.0%	<1.0%	11.5%	3.9%	0.0%	6.5%	15.5%	0.0%	62.2%	<1.0%
GRADUATE: DOCTORAL PROGRAMS	226	56.2%	32.3%	5.3%	4.0%	0.0%	3.1%	8.4%	0.0%	46.9%	<1.0%
GRADUATE: MASTER'S PROGRAMS	150	67.3%	2.0%	10.7%	3.3%	0.0%	14.0%	10.7%	0.0%	58.7%	<1.0%
UNDERGRADUATE PROGRAMS	348	83.6%	3.2%	6.0%	3.4%	0.0%	6.3%	4.6%	0.0%	75.6%	1.1%
FULL-TIME STAFF¹											
PROFESSIONAL	1,302	77.9%	3.5%	3.5%	1.8%	<1.0%	7.2%	4.8%	<1.0%	78.8%	<1.0%
ADMINISTRATIVE (CLERICAL)	242	90.5%	2.5%	2.9%	<1.0%	<1.0%	12.8%	<1.0%	0.0%	79.3%	<1.0%
FUNCTIONAL (RESEARCH/TECHNICAL)	449	67.2%	5.1%	5.3%	2.4%	<1.0%	9.1%	7.8%	0.0%	69.5%	<1.0%
FULL-TIME FACULTY²											
TENURE-TRACK/TENURED	686	30.0%	--	3.6%	1.3%	0.0%	2.6%	22.9%	0.0%	70.1%	<1.0%
NON-TENURE	2,228	40.2%	--	3.1%	<1.0%	<1.0%	4.2%	21.7%	<1.0%	69.7%	<1.0%
TRAINEES³											
RESIDENTS/FELLOWS	1,265	45.4%	15.9%	4.5%	--	<1.0%	5.4%	20.0%	0.0%	69.5%	0.0%
POST-DOCTORAL FELLOWS	231	48.9%	68.4%	2.2%	<1.0%	0.0%	2.2%	8.2%	<1.0%	18.2%	0.0%
STATE OF INDIANA⁴											
POPULATION ESTIMATES, 2019	6,731,219	50.7%	--	7.3%	2.2%	0.4%	9.9%	2.6%	0.1%	84.8%	--

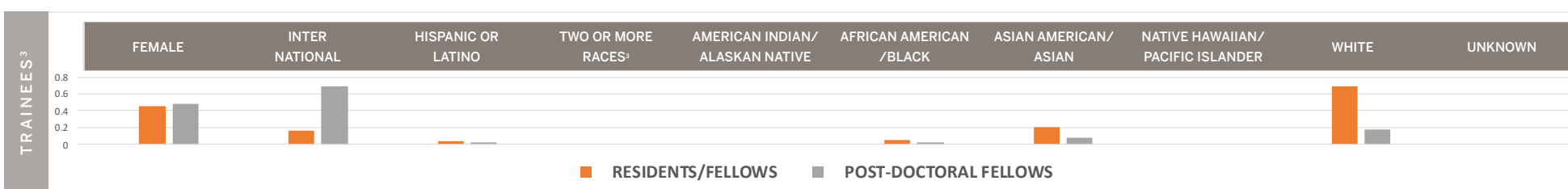
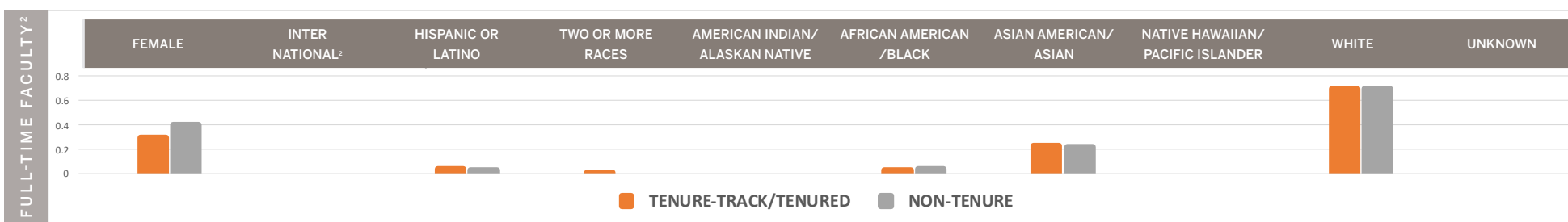
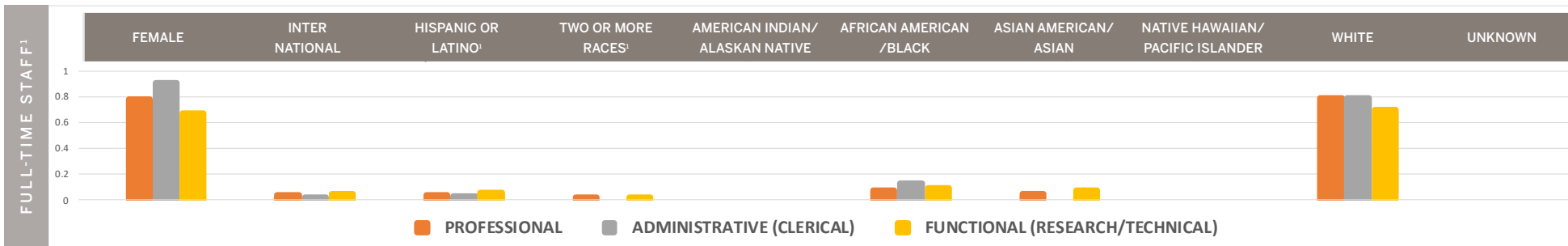
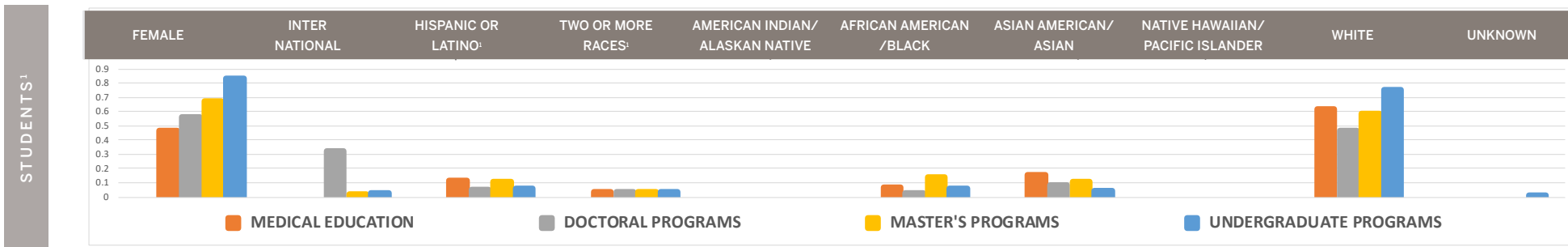
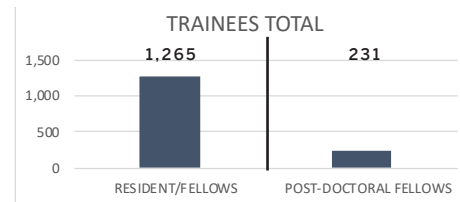
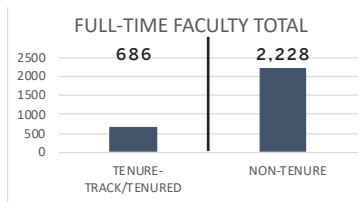
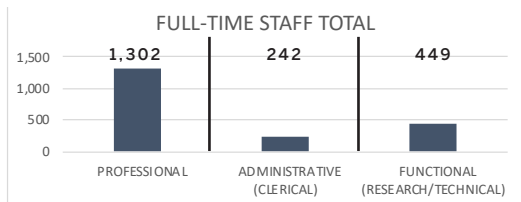
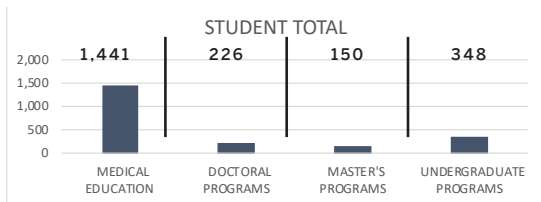
¹IU STUDENT AND STAFF DATA FOLLOWS FEDERAL REPORTING GUIDES CATEGORIZING INDIVIDUALS WHO SELECTED MORE THAN ONE RACE OR ETHNICITY INTO INTERNATIONAL, HISPANIC OR LATINX, OR TWO OR MORE RACES. [SEE UIRR DATA GUIDE FOR MORE INFORMATION](#) ABOUT LOGIC APPLIED. THE ORDER OF RACE OR ETHNICITY CATEGORIES, FIRST, FOLLOWS LOGIC APPLIED, AND THEN, ALPHABETICALLY LISTS SINGLE-SELECTED CATEGORIES.

²IU SCHOOL OF MEDICINE FACULTY DATA SYSTEM DOES NOT REPORT INTERNATIONAL STATUS AS A RACE OR ETHNICITY CATEGORY.

³IU SCHOOL OF MEDICINE RESIDENCY DATA SYSTEM DOES NOT REPORT 'TWO OR MORE RACES' AS A CATEGORY.

⁴SOURCE: U.S. CENSUS BUREAU

IU SCHOOL OF MEDICINE DIVERSITY FACT SHEET ACADEMIC YEAR 2020-2021



¹IU STUDENT AND STAFF DATA FOLLOWS FEDERAL REPORTING GUIDES CATEGORIZING INDIVIDUALS WHO SELECTED MORE THAN ONE RACE OR ETHNICITY INTO INTERNATIONAL, HISPANIC OR LATINO, OR TWO OR MORE RACES. [SEE IJRR DATA GUIDE FOR MORE INFORMATION](#) ABOUT LOGIC APPLIED. THE ORDER OF RACE OR ETHNICITY CATEGORIES, FIRST, FOLLOWS LOGIC APPLIED, AND THEN, ALPHABETICALLY LISTS SINGLE-SELECTED CATEGORIES.
²IU SCHOOL OF MEDICINE FACULTY DATA SYSTEM DOES NOT REPORT INTERNATIONAL STATUS AS A RACE OR ETHNICITY CATEGORY.
³IU SCHOOL OF MEDICINE RESIDENCY DATA SYSTEM DOES NOT REPORT 'TWO OR MORE RACES' AS A CATEGORY.

